

Opening a Web Site in Microsoft Expression Web

If you are working on a Maxwell computer that's running Windows 7, then you will find "Expression Web 3" has replaced "SharePoint Designer" for editing web pages. You will find Expression Web 3 in this location:

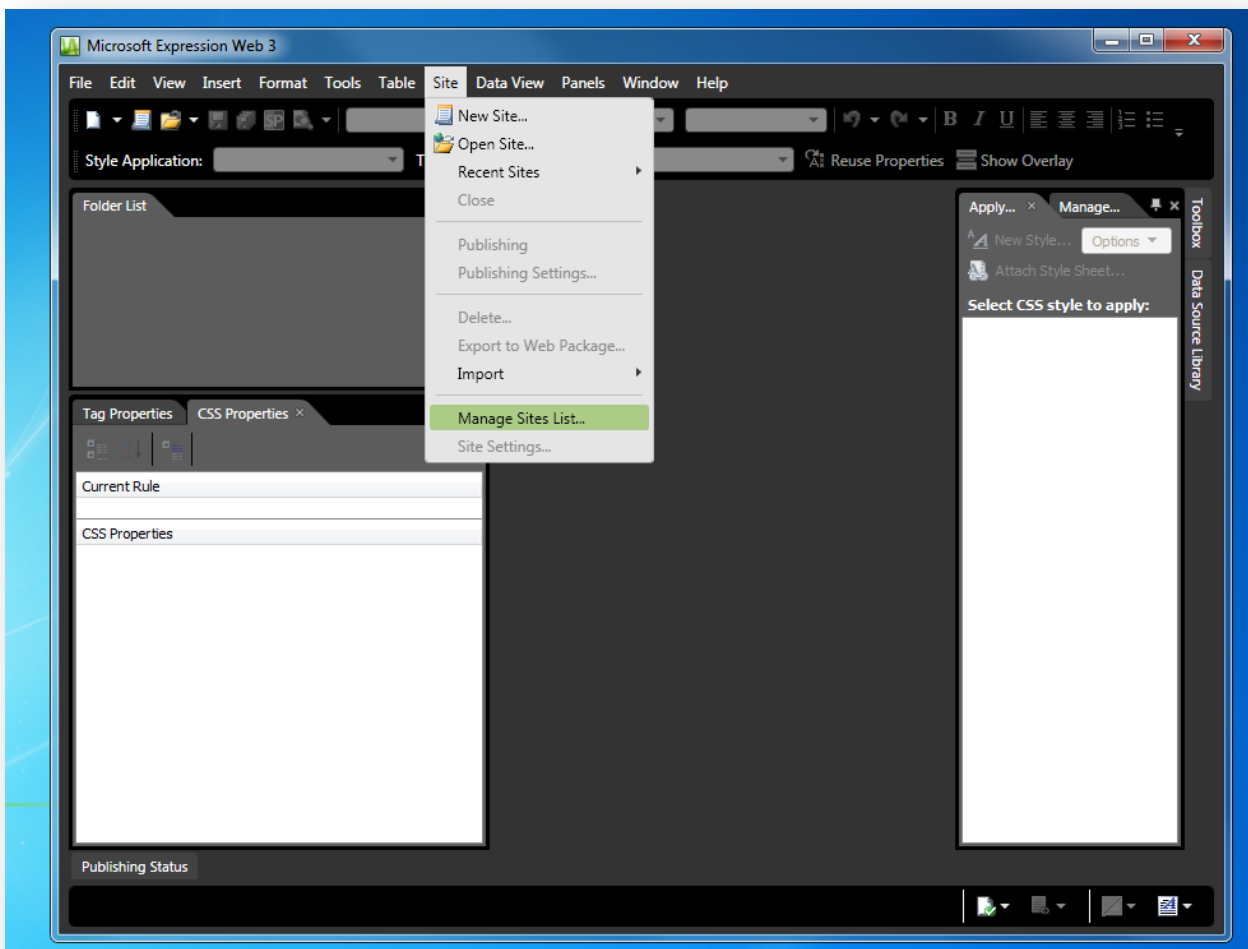


Start > All Programs Microsoft Expression > Microsoft Expression Web 3

While it's similar to SharePoint Designer (and the old Microsoft Frontpage) in many ways, you will find the menu used to open and connect to your web site has moved.

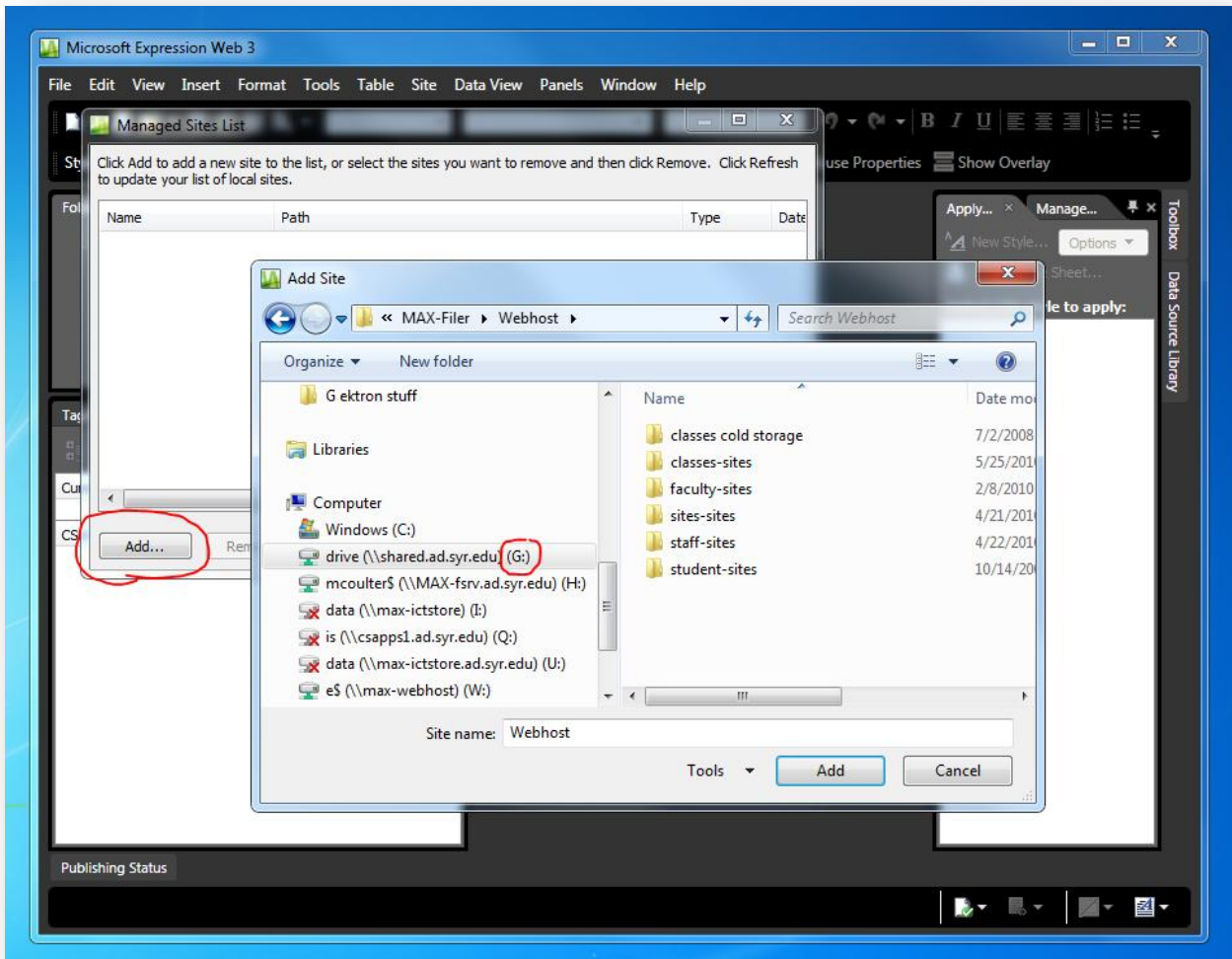
Please follow these steps to opening your site:

1) Go to the menu Site > **Manage Sites List...**



2) Add your Maxwell site address to the list. In most cases, your site will be accessed through a path starting like this:

G:\MAX-Filer\Webhost\zzzz-sites\jdoe



Continue through the folder structure to find your personal faculty or class folder. When you reach your personal folder such as this:

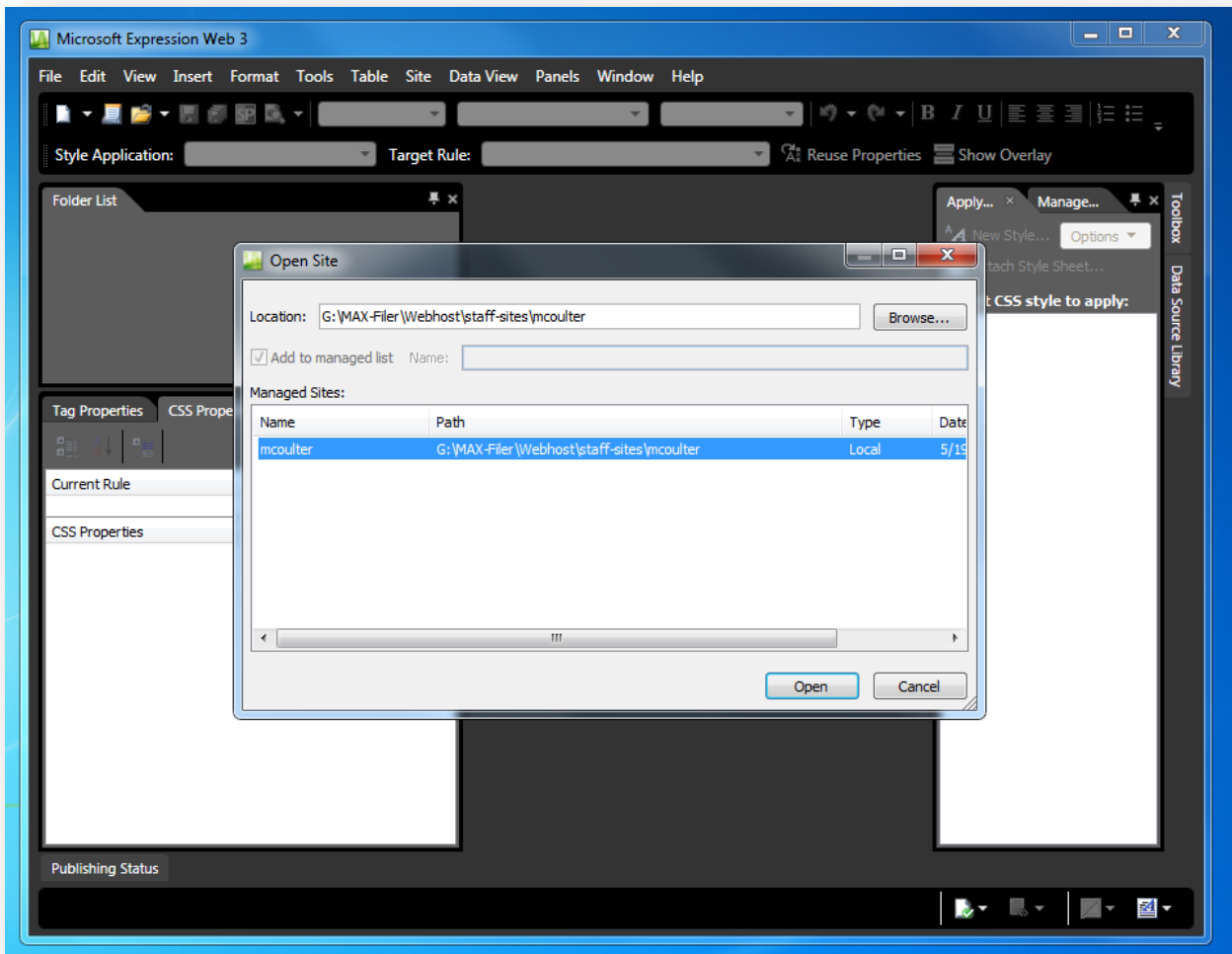
G:\MAX-Filer\Webhost\faculty-sites\jdoe

G:\MAX-Filer\Webhost\classes-sites\your-class

Finish adding the site by clicking the "add" button.

3) Your site can now be opened by going back to the menu:

Site > Open Site... > Select your site > Open



Once the site is open, you will find that making typical site edits should be very similar to the process of editing your web pages in SharePoint Designer.

NOTE: If you connected to the “development” location for your site and need to “publish” your site to the live server please add your publishing destination through the following menu:

Site > Site Settings > Add...

For further information please email webmaster@maxwell.syr.edu.